



Stackable Design



### Specification

Model	KP20 Conventional Rotator Set (Drive and Idler)
Safe Working Load - Drive Unit	10 tonne
Safe Working Load - Idler Unit	10 tonne
Maximum Load Carrying Capacity - Set	20 tonne (1 Drive & 1 Idler)
Rotation Capacity, Drive Unit	30 tonne
Wheel Centre Distance	18.9, 30.7, 42.5, 66.1, 89.8in (480, 780, 1080, 1680, 2280mm)
Vessel Diameter Capacity	13.8in to 196.9in (350mm to /5000mm)
Rotation Speed Range	5.5 to 55.1 in/min (140 to 1400 mm/min)
Tyre Type	Polyurethane, 95A durometer shore rating
Wheel Size	15in diameter x 5in wide (381mm x 127mm)
Overall Height to Top of Tyre	24.6in (625mm)
Remote Pendant Type	Plug & Socket Five Push Button Control (forward/stop/reverse/speed control/e-stop), 50ft (15m) cable
Rotation Drive Motors	2 x 0.75kW
Primary Input Power	380 to 480 V, 3 Phase, 50/60Hz
Input Current at Rated Load	6.8amp
Overall Length & Width - Drive	112.2in x 24in (2850mm x 610mm)
Overall Length & Width - Idler	112.2in x 16.1in (2850mm x 410mm)
Weight - Drive	1645lb (750kg)
Weight - Idler	1102lb (500kg)

Key Plant is a **global leader** in the **design and manufacture of weld automation equipment** and more.

We **Sell, Rent** and **Lease** our innovative welding and positioning equipment - **all over the world**.

We are **industry gamechangers**, Can't find what you require? or need a larger capacity? **Contact a Key Plant specialist today.**

Stay Connected.



+44 (0)1538 388 388

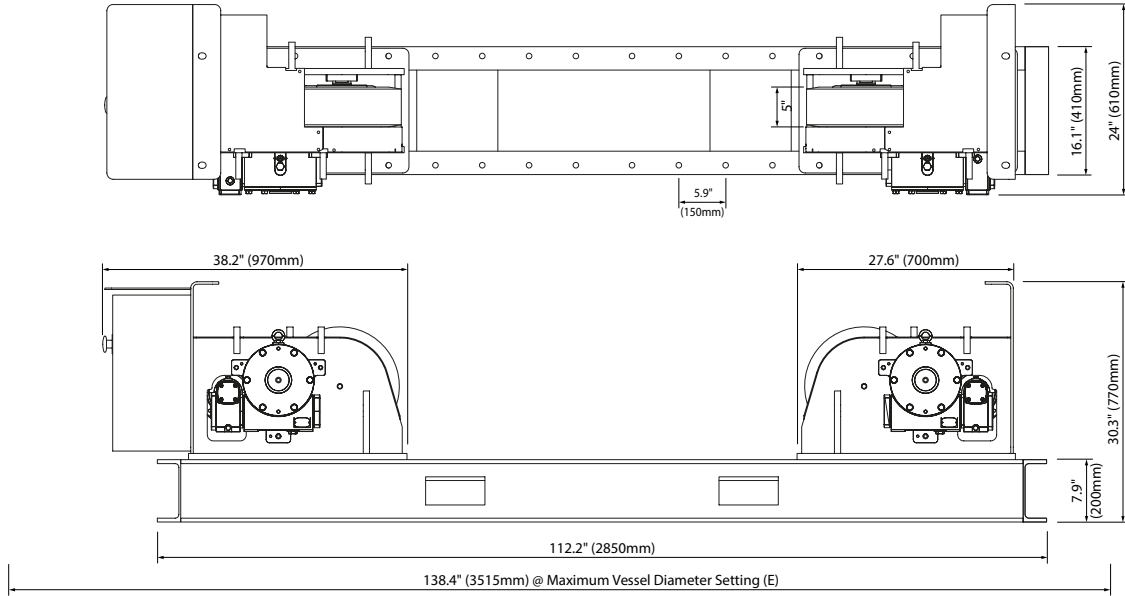


+1 (832) 770 9173

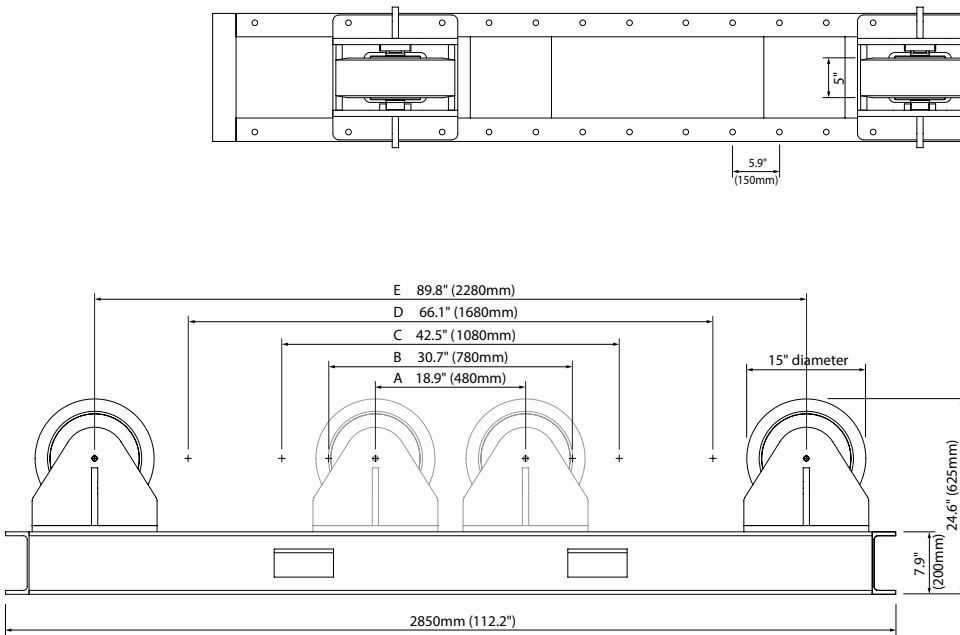
sales@keyplant.com

www.keyplant.com

### Drive Rotator



### Idler Rotator



#### Wheel Setting Workpiece Diameter Range

Setting	Range
A	13.8" (350mm) - 31.5" (800mm)
B	31.5" (800mm) - 55.1" (1400mm)
C	51.2" (1300mm) - 86.6" (2200mm)
D	86.6" (2200mm) - 141.7" (3600mm)
E	126" (3200mm) - 196.9" (5000mm)

Key Plant is a **global leader** in the **design and manufacture of weld automation equipment** and more.

We **Sell, Rent** and **Lease** our innovative welding and positioning equipment - **all over the world**.

We are **industry gamechangers**, Can't find what you require? or need a larger capacity? **Contact a Key Plant specialist today.**

Stay Connected.



+44 (0)1538 388 388



+1 (832) 770 9173

sales@keyplant.com

www.keyplant.com